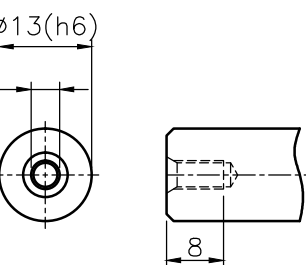
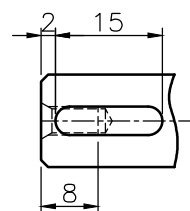


Shaft Option 1(K)



Shaft Option 2(S)

Inertia: 0.01-0.02kg*cm²

Mass: ≈0.69kg

Shaft Option S : Smooth output shaft(Standard)

Shaft Option K : Output shaft with keyway

Standard Backlash ≤ 12 arcmin

Bushing Supplied, when the motor shaft Dia. is small than φ8(Input Shaft Dia.)

General Tolerance		
6- 50 mm	±0.1	
50- 120 mm	±0.2	
120- 315 mm	±0.3	
315- 1000 mm	±0.5	



科駿精密工業股份有限公司
KOJIN PRECISION INDUSTRIAL CO., LTD.
TEL: 04-22798586 FAX: 04-22798453

圖號	MF40X-L2			Name	Date	設計	B
圖名	組合圖 □30-PCD □46-M4			Drawing		設計	C
比例	1 : 1	版次	A	Check		變更	D
				Approv.			E